

Take Control of Your Plating Bath

QUALILAB[®] QL-10EX

Qualilab is Plating Bath Analysis with CVS Accuracy

QUALILAB QL-10EX is a new generation of ECI's Bench-top Analyzer with a multi-sampling turntable. It provides automated analysis of up to 12 different plating samples in a sequence.

QL-10EX is a compact, all-in-one analyzer designed especially for busy chemical laboratories. It has robust and reliable hardware to ensure accurate analysis.

The QL-10EX includes a new software platform that quantitatively determines organic additives and inorganic components in almost every electroplating solution, whether in a PCB factory or Semiconductor fab.

The new software platform was developed to enhance the user's experience and operational capabilities. QL-10EX provides improved analytical performance of the newest chemistries, it reduces the analysis and operator time, and introduces new features and procedures such as: combining multiple tasks into one sequence, advanced reporting, and data handling tools including correction coefficients, convenient user interface and troubleshooting features.



Programmable Multi-Sampling System for Analysis of Organics and Inorganics



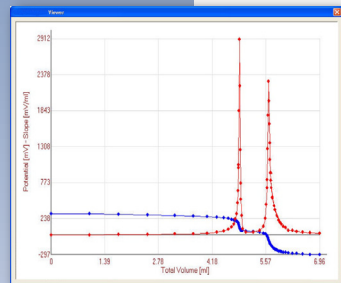
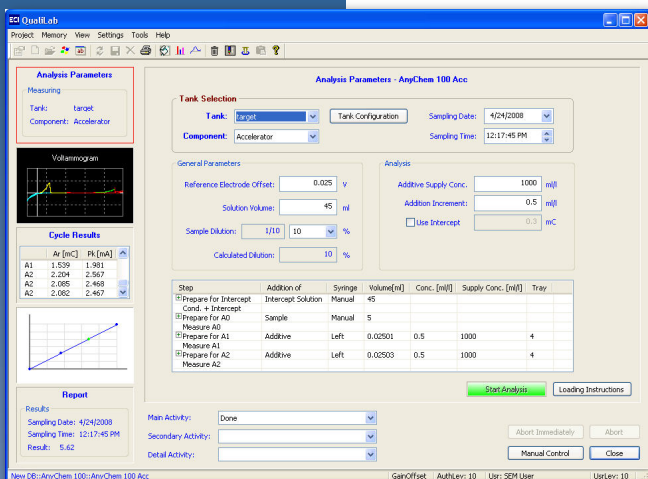
QUALILAB® QL-10EX

Easy-to-use, reliable, unfailingly accurate, built to last and affordable...that's the QL-10EX

Features and Benefits

The QL-10EX comes "fully packed" with all the features we know are important to you. You'll find:

- 15-position turntable and 14-position sample tray
- Exchangeable electrode head for easy conversion from CVS analyzer to potentiometric auto-titrator
- Automatic syringe delivery system
- The largest applications library in the industry
- Modular design allows for easy upgrades
- Reliable long lasting hardware
- New Software Platform:
 - Accuracy and reproducibility - the best on the market
 - Automated multi task sequence – To Reduce analysis and operator's time
 - Advanced reporting and data handling including statistics, trend analysis and history management
 - XML connection to Lab Information Management Systems
 - "Get Me Expert" - Trouble Shooting Package for end user
 - New, friendly, intuitive user interface
 - Import utility for procedures from older software generations



Typical Applications

- Ideal analyzer for electroplating and electroless deposition processes control such as: Cu, Sn, Sn-Pb, Pb, Ni, Ag, Cr, as well as Al anodizing solutions and cleaners
- With the QL-10EX, you'll get accurate, reliable monitoring of organic additives, inorganic components and contaminants.
- Incoming and outgoing inspection of additives
- Optimization and monitoring of carbon treatment procedure
- Studying component consumption rates
- Optimizing new plating processes and developing new formulations

Worldwide Distribution & Support Available

深圳市锦贤科技有限公司
SHENZHEN GENESEA TECHNOLOGY CO., LTD.
电话: 0755-36838322 传真: 0755-28226934
网站: www.gene-sea.com
邮箱: genesea@126.com
Q Q: 510244122 32174454

